

## FURTHER PARTICULARS

### The University of Cambridge

The University of Cambridge is one of the world's leading Universities, with an outstanding reputation for academic achievement and research.

Cambridge comprises 31 Colleges and more than 150 departments, faculties, schools and other institutions plus a central administration.

This role will be based within the Department of Social Sciences, within the Faculty of Human, Social and Political Science.

<b>Post</b>	Research Associate
<b>Summary of Role</b>	Research Associate to work with Professor Lawrence King on an European Research Council funded research project examining the relationship between mass privatization and mortality in post communist eastern Europe.  <i>More detailed information is provided under the Role Description</i>
<b>Location</b>	Department of Sociology, Free School Lane, Cambridge, CB2 3RQ
<b>Terms and Conditions</b>	
<b>Salary</b>	£28,695- £37,394
<b>Grade</b>	7
<b>Working pattern</b>	Monday – Friday
<b>Hours of work</b>	36.5
<b>Limit of tenure</b>	This post is available from 1 April 2015 – 31 March 17.
<b>Annual leave</b>	Full time employees are entitled to annual paid leave of 6.6 weeks (or 33 days for those working full time), plus public holidays.
<b>Pension</b>	Yes
<b>Closing date for applications</b>	10 March 2015
<b>Expected date for interview/selection</b>	March 2015

<b>Start date</b>	1 April 2015
<b>How to apply</b>	<p>Please send a personal statement, a curriculum vitae and a signed and completed copy of Parts 1 and 3 of the CHRIS/6 form: (<a href="http://www.hr.admin.cam.ac.uk/forms/chris6-cover-sheet-cvs">http://www.hr.admin.cam.ac.uk/forms/chris6-cover-sheet-cvs</a>). Applicants should also arrange for two referees to send references directly to Mr Alistair Cameron on their behalf by the same date, enclosing a completed data protection form: <a href="http://www.sociology.cam.ac.uk/furtherparticulars/data_protection_act_form.pdf">http://www.sociology.cam.ac.uk/furtherparticulars/data_protection_act_form.pdf</a></p> <p>Information should be submitted to: Alistair Cameron, email: <a href="mailto:applications@sociology.cam.ac.uk">applications@sociology.cam.ac.uk</a></p> <p><b>Please quote reference: JM05271</b></p>

### Equal Opportunities Information

The University of Cambridge appoints solely on merit. No applicant for an appointment in the University, or member of staff once appointed, will be treated less favourably than another on the grounds of sex (including gender reassignment), marital or parental status, race, ethnic or national origin, colour, disability (including HIV status), sexual orientation, religion, age or socio-economic factors.

### Information if you have a Disability

The University welcomes applications from individuals with disabilities. Our recruitment and selection procedures follow best practice and comply with disability legislation.

The University is committed to ensuring that applicants with disabilities receive fair treatment throughout the recruitment process. Adjustments will be made, wherever reasonable to do so, to enable applicants to compete to the best of their ability and, if successful, to assist them during their employment.

We encourage applicants to declare their disabilities in order that any special arrangements, particularly for the selection process, can be accommodated. Applicants or employees can declare a disability at any time.

Applicants wishing to discuss with or inform the University of any special arrangements connected with their disability can, at any point in the recruitment process, contact, Mr Alistair Cameron, on 01223 7334520, by email on [applications@sociology.cam.ac.uk](mailto:applications@sociology.cam.ac.uk) or by post to Department of Social Sciences, Free School Lane, Cambridge, CB2 3RQ.

For additional guidance and information, applicants can contact the HR Business Manager responsible for the department they are applying to via [hrenquiries@admin.cam.ac.uk](mailto:hrenquiries@admin.cam.ac.uk).

### Further Information

There is a range of information which you may find helpful on the University's website: [www.cam.ac.uk/jobs/](http://www.cam.ac.uk/jobs/). This includes applying for posts, working at the University, living in Cambridge and details of current vacancies.

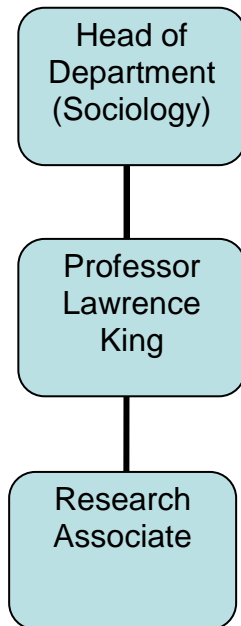
Attachment: CHRIS/PD33 Part 2 – Role Description

## Role Description

### Role Identification

Faculty / Department	Social Sciences / Sociology	Role Code Number (if any)	
Position title	Research Associate	Date of this revision (dd/mm/yyyy)	12/01/2015
Probation period	6 months	Grade (completed by Grading & Reward)	7

### Organisation chart



Line manager position title	Professor in Sociology
-----------------------------	------------------------

### Pre-employment checks required

*All applicants are legally required to demonstrate the right to work/permission to work in the UK. The requirement for any higher level pre-employment checks is dependent on the role. The box below indicates the checks that are necessary for this particular role. Any offer of employment will be conditional upon the satisfactory outcome of these checks and whether an outcome is satisfactory will be determined by the University.*

	Yes	No
Right to work in UK	X	
Criminal Records Bureau		
Criminal Records (enhanced)		
Occupational Health		
Security		
NHS Honorary Contract Required		
ISA: Regulated Activity		
ISA: Controlled Activity		

## Role Purpose

To assist the P.I., Dr. Lawrence Peter King with the successful implementation of an EU-funded research project titled Privatisation and Mortality

## Main Responsibilities

	Key duties and responsibilities	% time spent/ frequency
1	<b>Data analysis</b> Tasks will include leading multiple analyses using the data collected from our demography survey to identify the causal effect of privatisation speed and type on mortality.	55
3	<b>Manuscript Preparation</b> The research associate will co-author several journal manuscripts. The associate will also submit papers to academic conferences and be encouraged to present research findings. These steps will occur in conjunction with the overall Privatisation and Mortality project team.	35
2	<b>Data collection and management</b> Assisting the large scale data collection exercises as part of the Privatisation and Mortality research project in Belarus, Hungary, and Russia, in particular by conducting data quality checks and enhancement procedures.	10

## Person profile

### Essential knowledge, skills and experience required for role

<b>Education &amp; qualifications</b>	<ul style="list-style-type: none"><li>• PhD in demography, epidemiology, statistics, social/political science or a related discipline (submitted or nearly submitted at the time of application)</li></ul>
<b>Specialist knowledge &amp; skills</b>	<ul style="list-style-type: none"><li>• Knowledge of the analysing complex demography surveys and demographic modelling of mortality outcomes</li><li>• Knowledge of advanced statistical techniques such as multilevel modelling and techniques for measuring treatment effects</li><li>• Knowledge of managing large scale survey datasets</li><li>• Strong quantitative analysis skills</li><li>• Proficiency using STATA, SAS or R</li><li>• Knowledge of the literature on determinants of mortality</li></ul>
<b>Interpersonal &amp; communication skills</b>	<ul style="list-style-type: none"><li>• Excellent interpersonal and communication skills</li><li>• Good writing ability (preferably demonstrated with published writings)</li></ul>
<b>Relevant experience</b>	<ul style="list-style-type: none"><li>• Experience with analysing complex demography surveys and demographic modelling of mortality outcomes</li><li>• Experience with large population survey data sets</li><li>• Experience with advanced statistical techniques</li><li>• Experience with working in multinational research teams</li></ul>
<b>Additional requirements</b>	